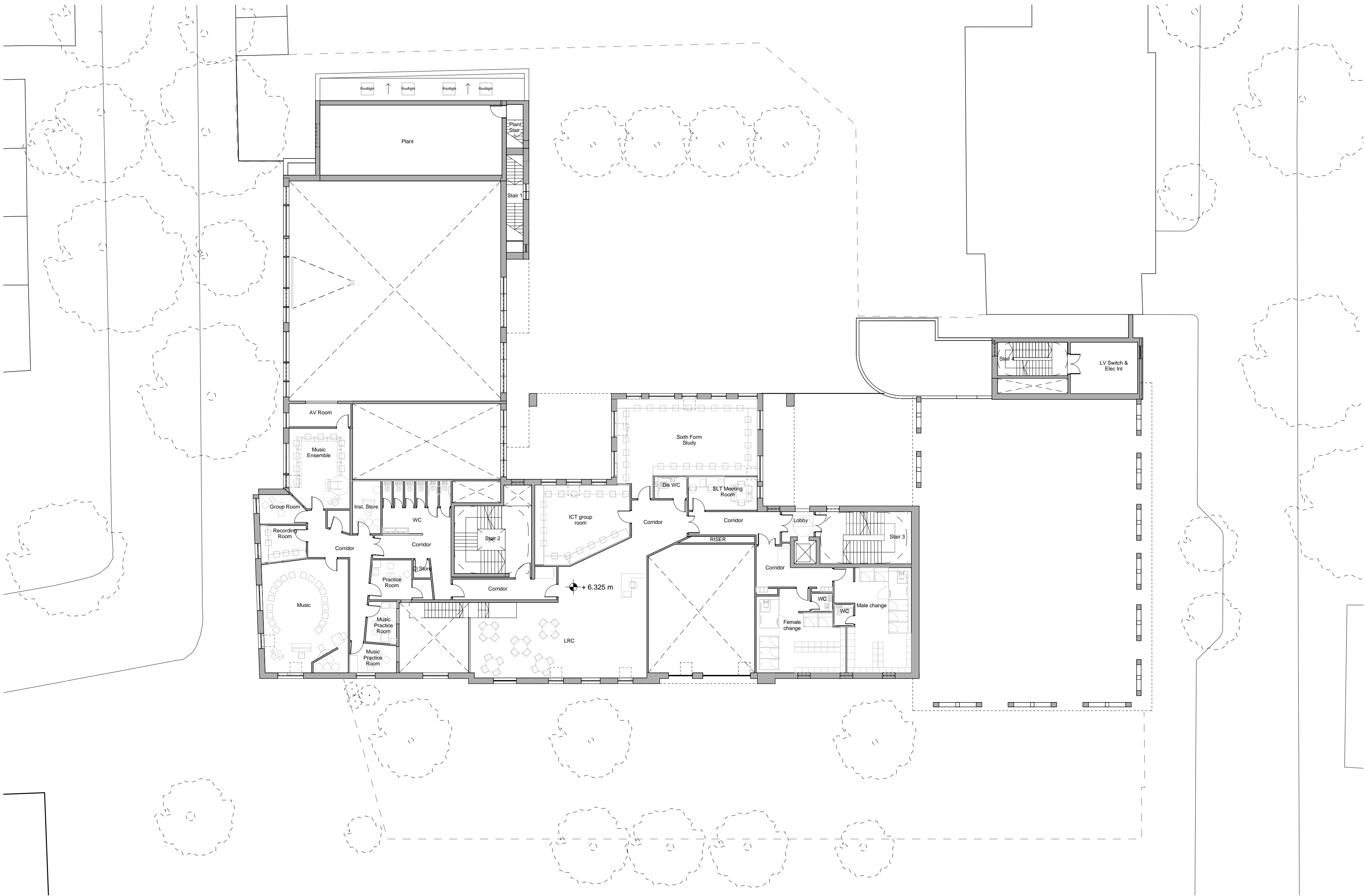
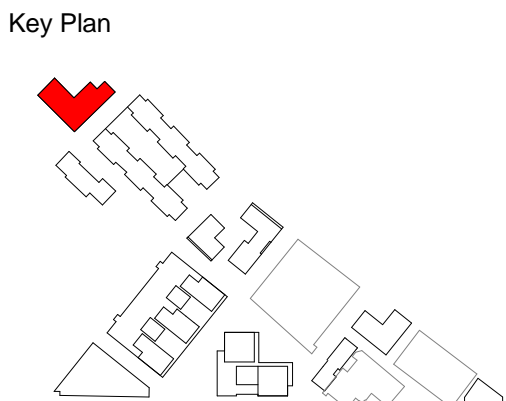


Ground Floor Plan



First Floor Plan

1:200 0 1 5 10 m



REVISIONS

No.	Revision	Date
A	Addendum	January 2018

COTTRELL & VERMEULEN ARCHITECTURE

1B Iliffe Street
London
SE17 3LJ
0207 708 2567

Client: Grosvenor Britain & Ireland

2607-CVA-BC01-XX-DR-PLN-A-0101

A

0381: The Bermondsey Project School

Ground and First Floor Plans as Proposed

Scale: 1 : 200 @ A1

October 2017

Drawn by: HH

Checked by: RC

Filename: 0381_CURRENT

Do not scale from this drawing
Confirm all dimensions on site